

↓
input,
raw materials,
parameters

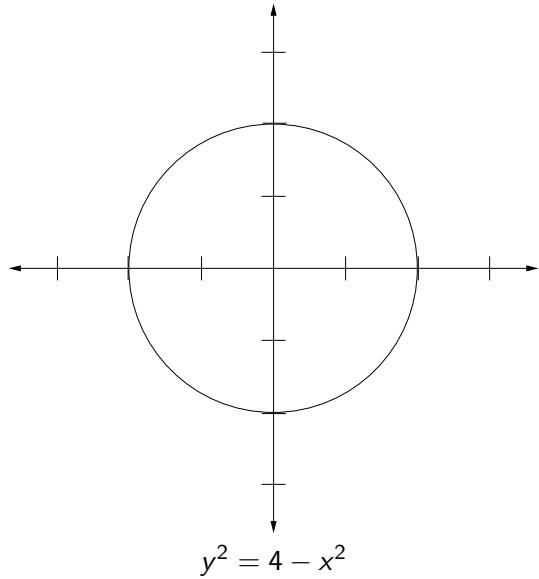
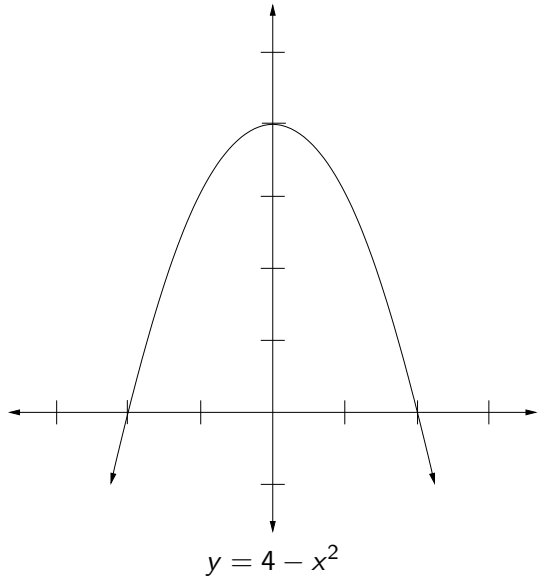
The diagram features a large, empty rectangular box with a thin black border. The word 'function' is centered within this box. Above the top-left corner of the box, the text 'input, raw materials, parameters' is displayed, with a downward-pointing arrow above it. A diagonal line extends from the top-left corner of the box towards this text. Similarly, above the top-right corner, the same text is repeated with another downward-pointing arrow above it, and a diagonal line extends from the top-right corner of the box towards it. Below the bottom-right corner of the box, the text 'output, result, returned value' is displayed, with a downward-pointing arrow below it. A diagonal line extends from the bottom-right corner of the box towards this text. The entire diagram is set against a plain white background.

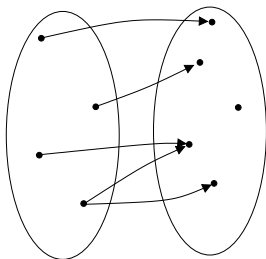
function

output,
result,
returned value

↓

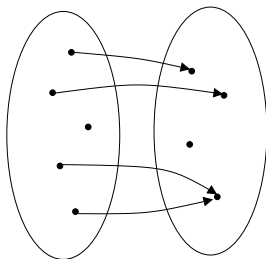
Alice	x3498
Bob	x4472
Carol	x5392
Dave	x9955
Eve	x2533
Fred	x9448
Georgia	x3684
Herb	x8401





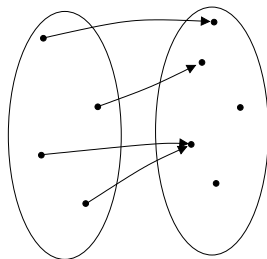
Not a function.

(There's a domain element that is related to two things.)



Not a function.

(There's a domain element that is not related to anything.)



A function.

(It's OK that two domain elements are related to the same thing and one codomain element has nothing related to it.)