

The COMMAND Pattern

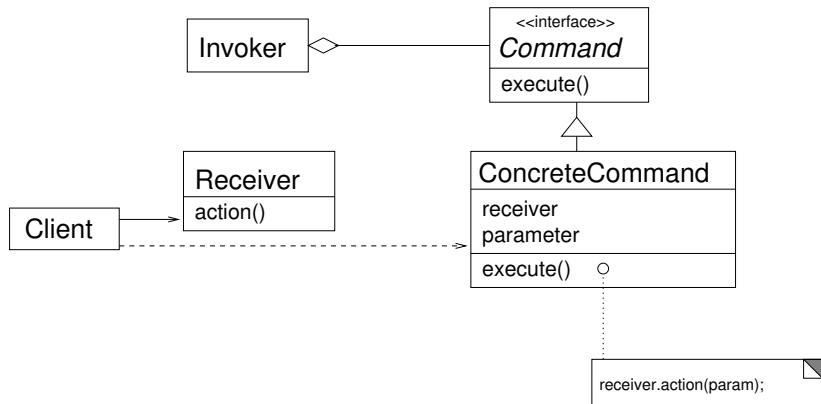
March 5, 2014

COMMAND intent

Encapsulate a request [message] as an object, thereby letting you parameterize clients with different requests, queue or log requests, and support undo-able operations.

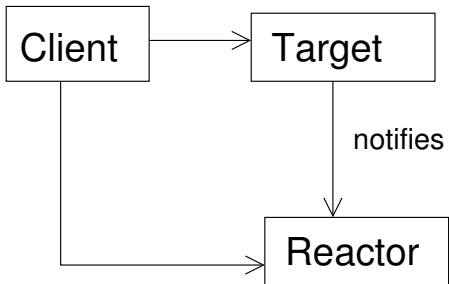
Gamma et al, pg 233

COMMAND structure



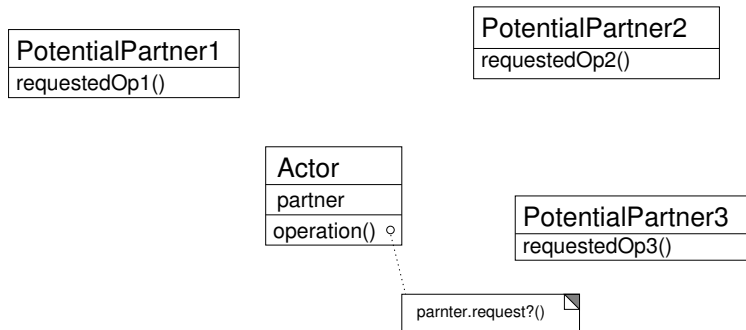
Adapted from Gamma et al, pg 236

“Reactor” pattern-category structure

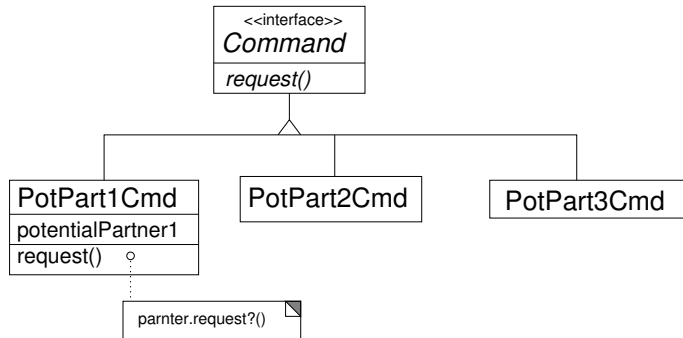


Based on Christopher Fox, *Introduction to Software Engineering Design*, pg 569

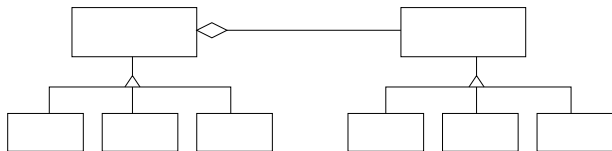
COMMAND as mini-adaptor



COMMAND as mini-adaptor



Pattern family



Pattern family

