

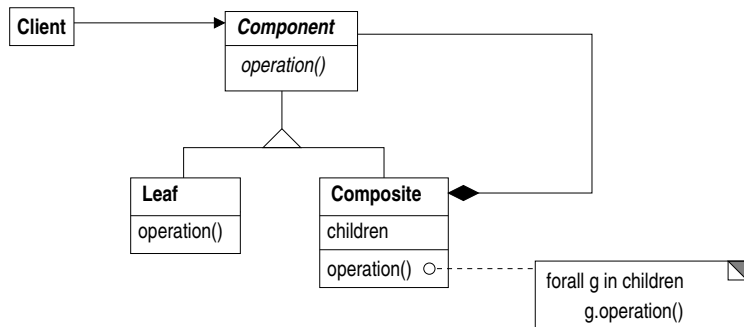
Composite; Bridge

Mar 19, 2014

Composite pattern

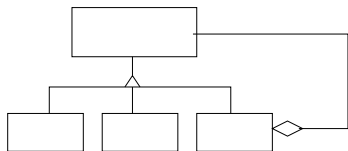
Compose objects into tree structures to represent part-whole hierarchies. Compose lets clients treat individual objects and compositions of objects uniformly.
DP, pg 163

Composite pattern



Compare DP, pg 164

Composite pattern

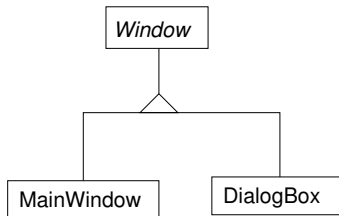


Bridge pattern

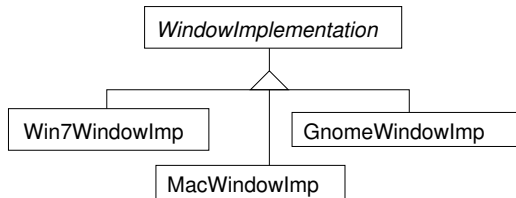
Decouple an abstraction from its implementation so that the two can vary independently.

DP, pg 151

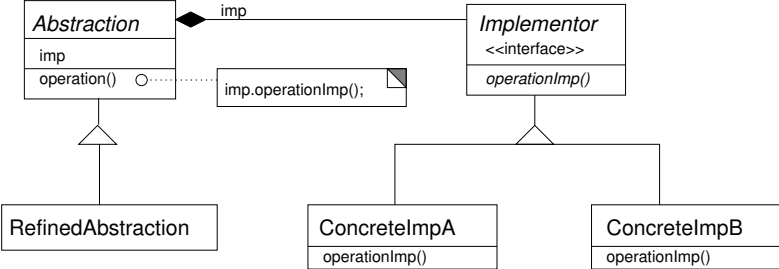
Bridge pattern



Compare DP, pg 152



Bridge pattern



Compare DP, pg 153

